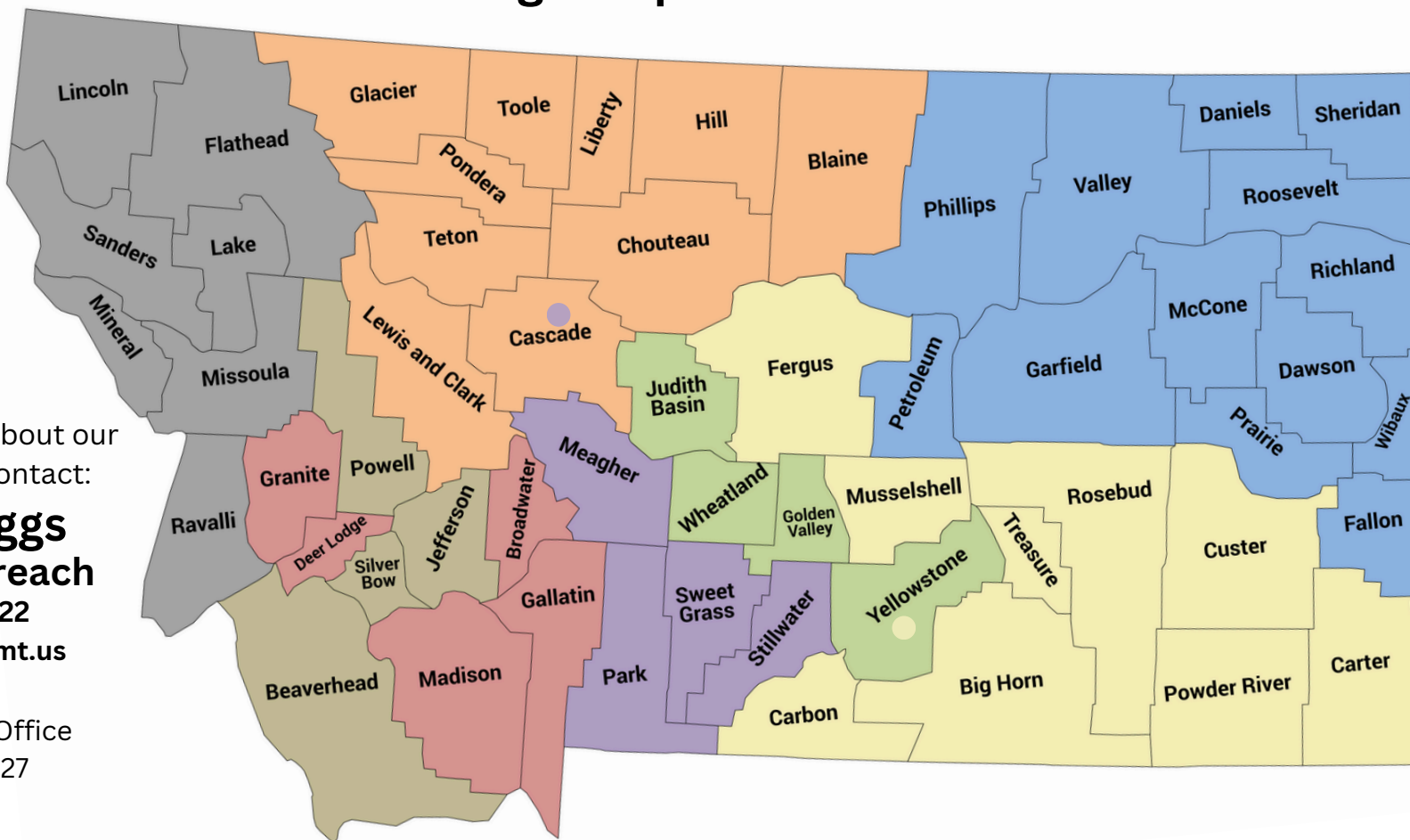


MSDB Deaf/Hard of Hearing Outreach Consultant Coverage Map & Contact Information



For more information about our Outreach programs contact:


Miranda Briggs
Director of Outreach

Cell: 406-403-1322
 mbriggs@msdb.k12.mt.us


Campus Outreach Office
 VP: 406-282-1927



Alice Anderson
 Cell: 406-468-4818
 VP: 406-203-4094
 aanderson@msdb.k12.mt.us



Amber Bateen
 Cell: 406-468-4819
 VP: 406-564-1531
 abateen@msdb.k12.mt.us




Leann Goss
 Cell: 406-590-0461
 VP: 406-564-1529
 lgoss@msdb.k12.mt.us



Emily LaSalle
 Cell: 406-461-1294
 VP: 406-205-1815
 elasalle@msdb.k12.mt.us



Kitty Griffin
 Cell: 406-925-1208
 VP: 406-564-1790
 kgriffin@msdb.k12.mt.us



Katie James
 Cell: 406-781-3906
 VP: 406-200-9103
 kjames@msdb.k12.mt.us



Lace Lesofski
 Cell: 406-880-0622
 llesofski@msdb.k12.mt.us



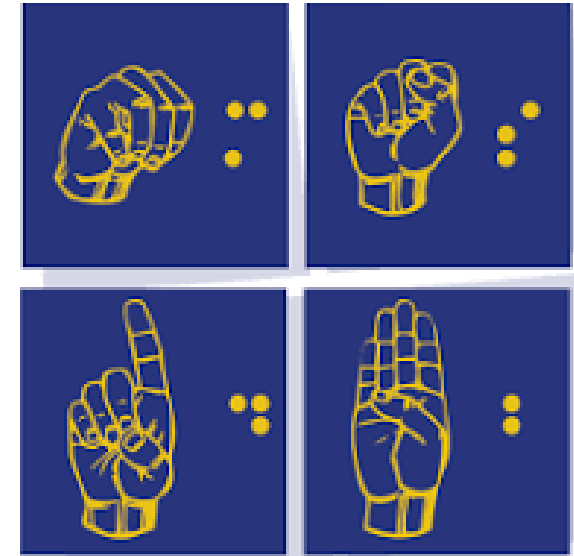
Amy Tangen
 Cell: 406-868-0851
 atangen@msdb.k12.mt.us

Services Offered:

- Offer suggestions, recommendations and consultation to classroom teachers and specialists
- Assign Family Advisors and Deaf Mentors
- Provide home based consultative services
- Collaborate with other service providers to develop Individual Family Service Plans (IFSPs)
- Suggest or lend specialized instructional materials
- Provide assessment options and input
- Participate in education meetings (Reevaluations, Reevaluation meetings, IEP, 504, etc.)
- Be available as an ongoing resource and support contact via phone and/or email
- Serve as a resource for medical, educational, and community programs
- Work closely with Part C providers, Early Childhood Centers, Speech Language Pathologists, and other related service providers
- Work closely with area audiologists to provide information regarding current and appropriate technology
- Work with MSDB campus to facilitate appropriate referrals of students for visits, evaluation, and/or placement at MSDB
- Provide in-service and trainings to schools, daycare centers, and other interested parties
- Plan Family Learning Weekends (FLW) and Campus Enrichment Days (CED), then provide related information to families
- Arrange educational trainings and workshop opportunities
- Care about your blind/visually impaired child!!



Montana School for the Deaf and the Blind



**Lifting Students
Beyond Expectations**

Deaf & Hard of Hearing Outreach Services

**3911 Central Ave
Great Falls, MT 59405
Fax: 406-771-6164
www.msdbmustangs.org**